

....



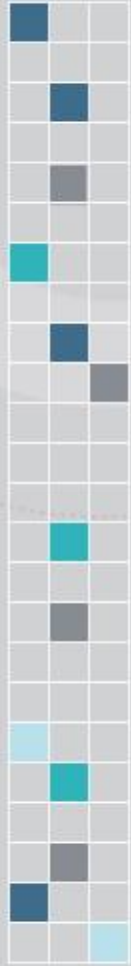


100

...



....



•

•

•

•

-

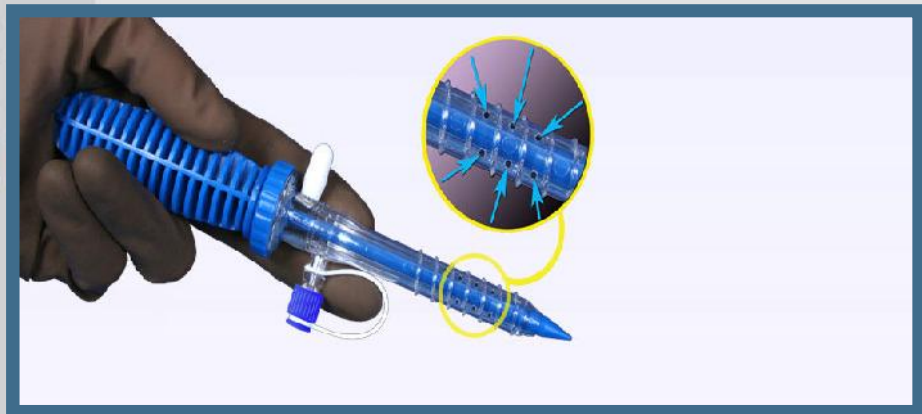
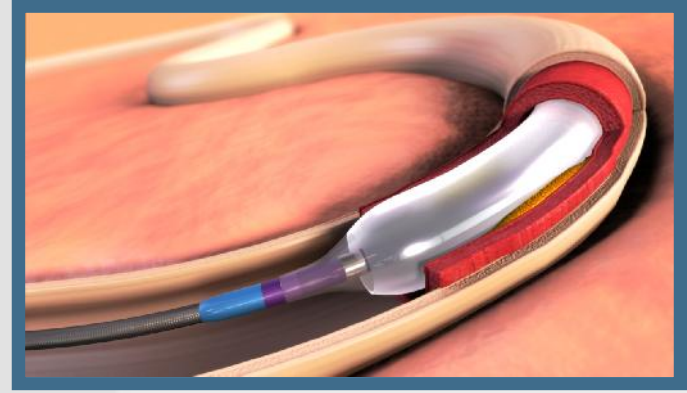
;

;

(

,

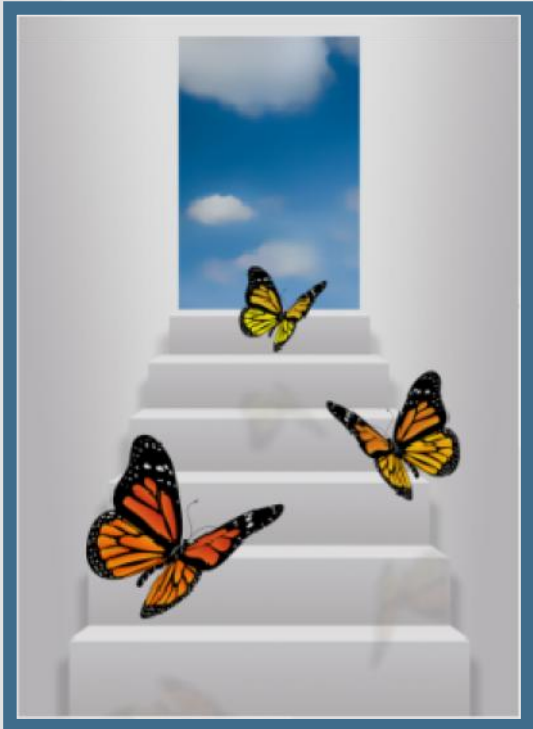
-);





,

....



?



•

•

•

•

•

-

;

;

,

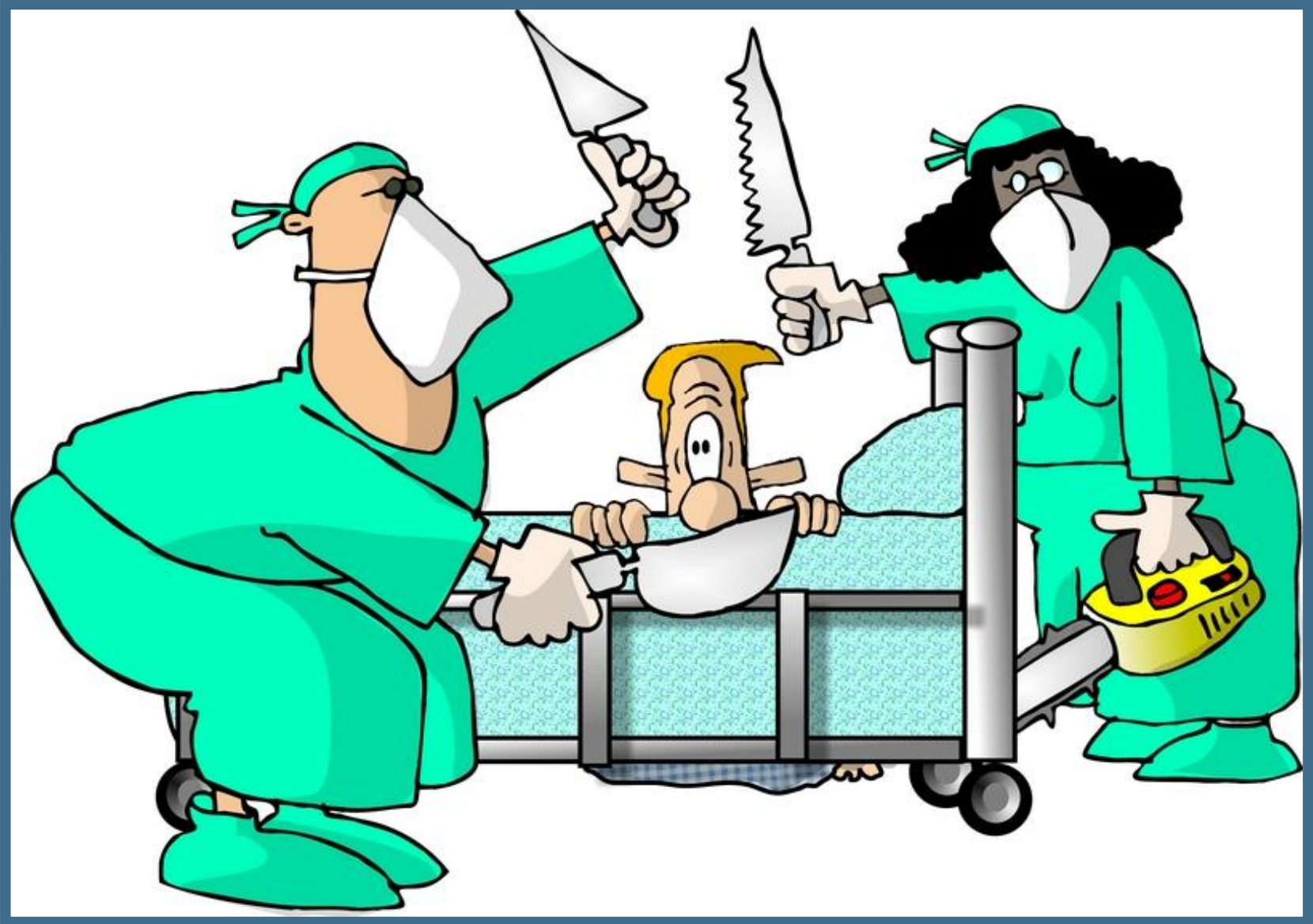
,

;

,

;

■





...



•

•

•

....

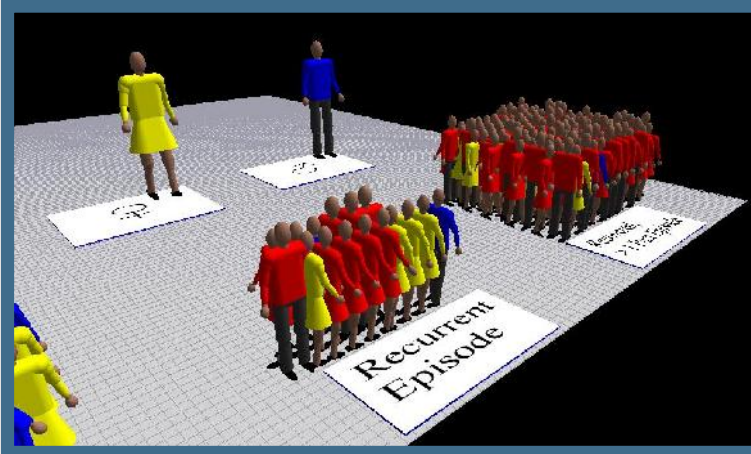
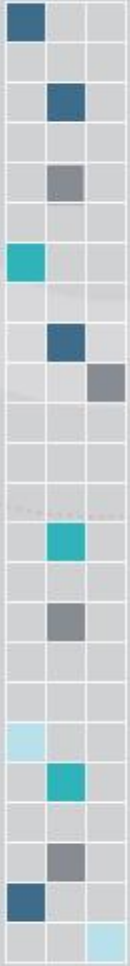
;

,

;

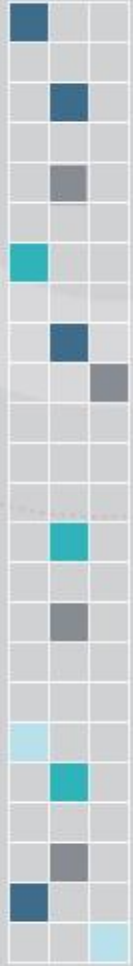
....





!

# Abstract Header



;

-

-

;

-

;

-

,

-

,

,

-

-

( . )



•

•

•

•

•

;

■

,

;

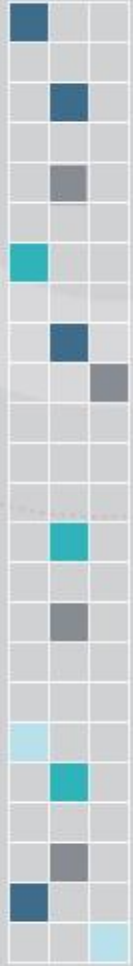
;

;





# Abstract Header



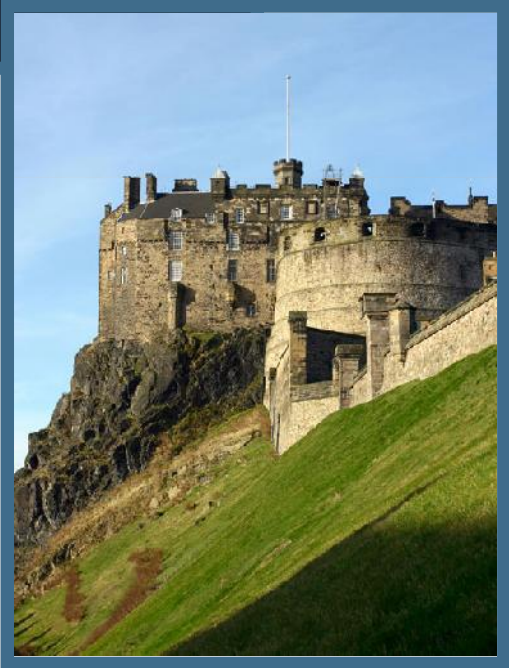


▪  
,

▪  
,

▪  
,

▪



# Abstract Header

■	■								
	■								
		■							
■									
	■								
		■							
			■						
				■					
					■				
						■			
							■		
								■	
									■

●

●

●

●

●

;

,

;

(

.

);

;

.

/

.



?

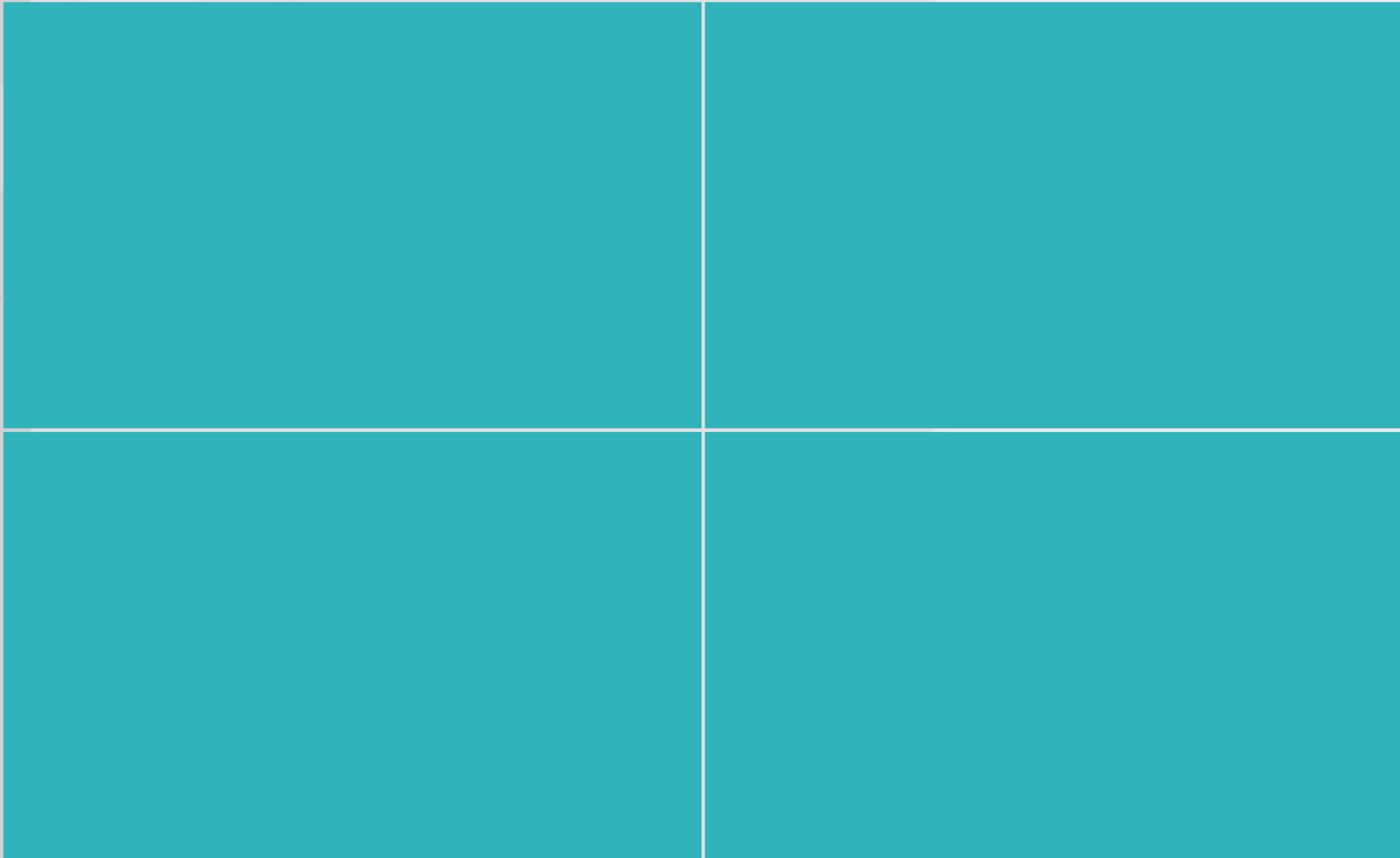
?

• 2000 .

“

...” – Recommendation No R (2000), 5 of the Council of Europe, 24 February 2000.





# Blank header area



Small dark blue horizontal line



,

;

,

,

,

,

...





# : Institute for Quality and Efficiency in Health Care (IQWiG)



*Patient and citizen participation in health care systems, Good practice in selected countries, Dusseldorf, 2011, project 27233*

# : Haute Autorite de Sante (HAS)



*Patient and citizen participation in health care systems, Good practice in selected countries, Dusseldorf, 2011, project 27233*



( .

);

;

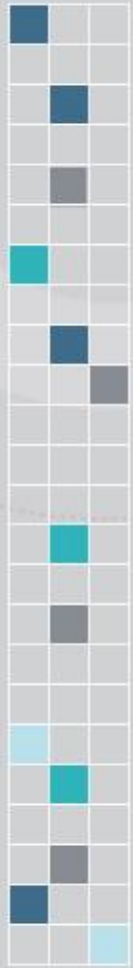
:

HAS;

,

*Patient and citizen participation in health care systems, Good practice in selected countries, Dusseldorf, 2011, project 27233*

# : National Institute for Health and Clinical Excellence (NICE)



•

(advisory committees),

(Citizens' Council);

• Patient and Public Involvement Programme (PPIP);

•

;

• NICE

,

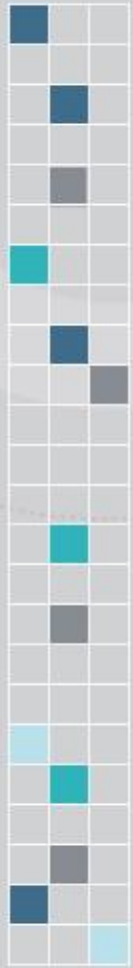
;

•

PPIP.

*Patient and citizen participation in health care systems, Good practice in selected countries, Dusseldorf, 2011, project 27233*

# Patient involvement in HTA in Europe,



•

- 11.02.2011

50 HTA

23.12.2010

;

•

40

50

;

•

:

,

,

,

,

,

,

,

,

,

,

,

,

,

,

,

,

,

,

,

,

,

,

-



40

(22)

EU-15;

1-10

14

3

4 -





•

•

•

•

•

(evidence-based medicine);

;

,

;

,

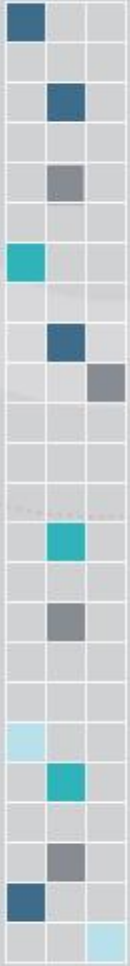
;

—

—

•

# HTA-



•

-

•

-

•

-

•

;

(

,

,

);



,

;

,

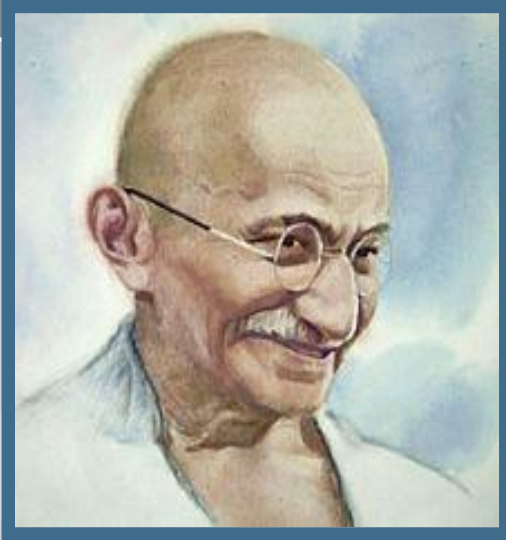
,

,

(

,

).



“

”

10-



**: assena\_stoimenova@mail.bg**